



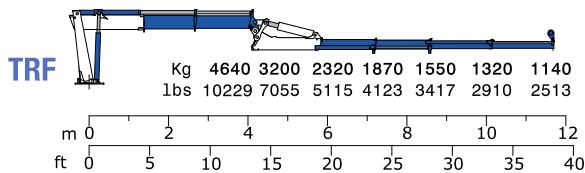
STANDARD



OPTIONAL



Momento statico massimo al perno torretta Max. static moment at the turret pin Moment statique max. a l'axe de la tourelle Max. statisches ubmoment am kran Saulenbolzen daN*m (lb*ft)	Coppia di rotazione Slew torque Moment de rotation Drehmoment daN*m (lb*ft)	Pressione Pressure Pression Druck bar (psi)
20900 (151198)	1750 (12660)	260 (3697)



		16600 TRF
Sbraccio idraulico / Hydraulic boom length / Longueur du bras hydraulique / Hydraulic reichweite	m (ft)	11.63 (38' 2")
Lunghezza / Length / Longueur / Gesamtbreite	mm (ft)	3260 (10' 8")
Larghezza / Width / Largeur / Breite	mm (ft)	1270 (4' 2")
Altezza / Height / Hauteur / Höhe	mm (ft)	2480 (8' 2")
Peso (senza olio e montaggio) / Weight (without oil and fitting) / Poids (sans huile et montage) / Gewicht (ohne Öl und ohne)	Kg (lbs)	2400 (5291)