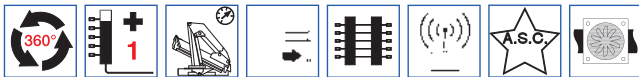


Serie 27500 E A.S.C. Plus



STANDARD

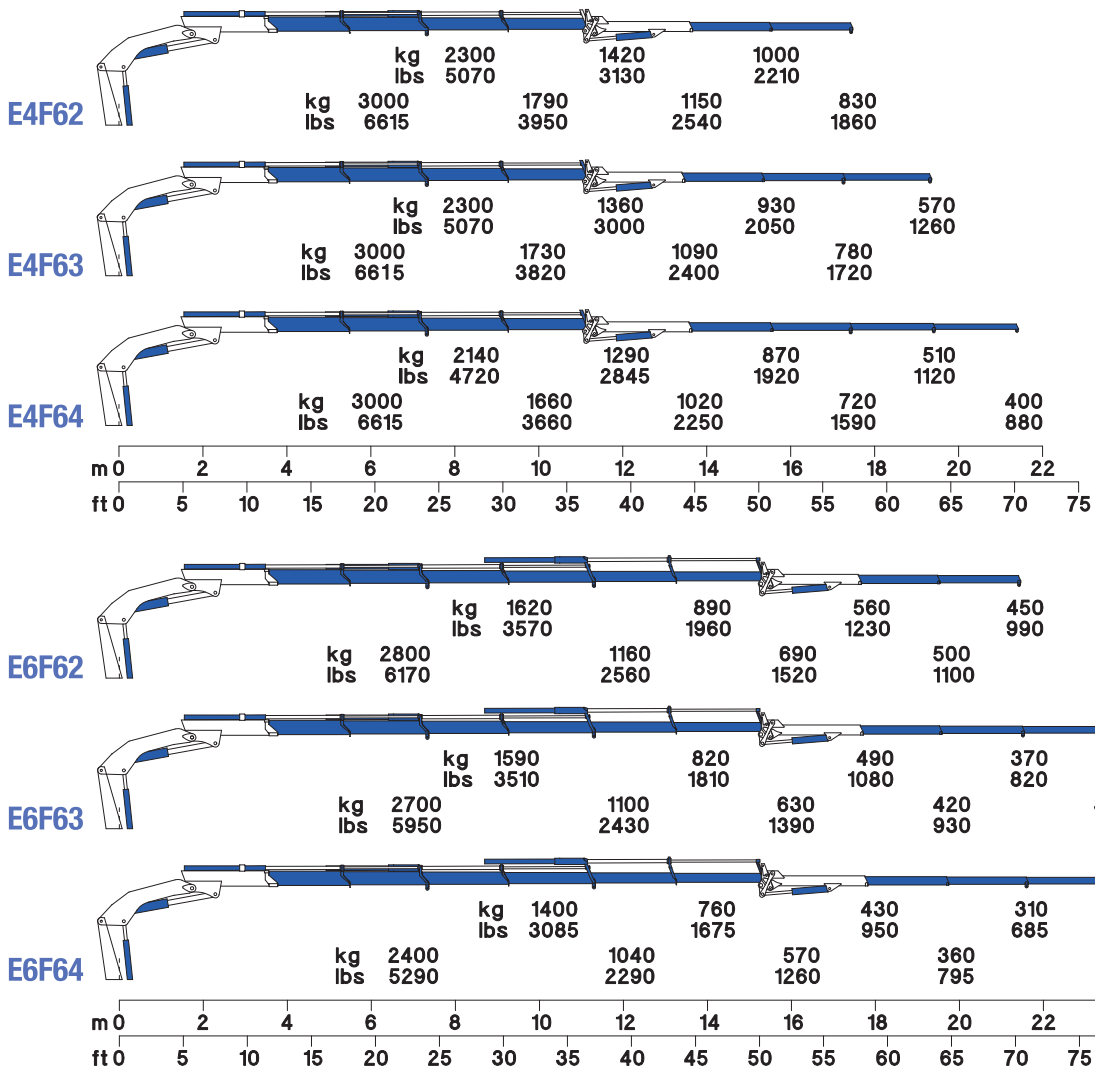
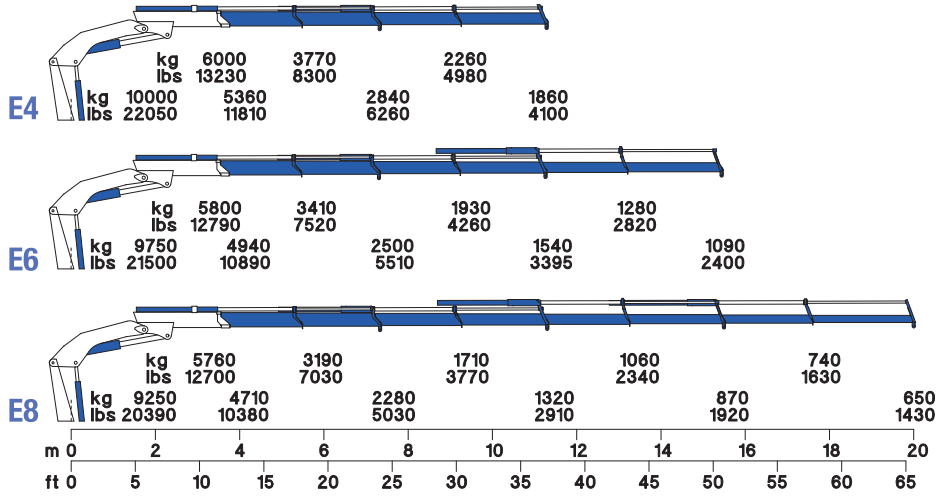


OPTIONAL



Momento statico massimo al perno torretta Max. static moment at the turret pin Moment statique max. a l'axe de la tourelle Max. statisches ubmoment am kranseulenbolzen daN*m (lb*ft)	Coppia di rotazione Slew torque Moment de rotation Drehmoment daN*m (lb*ft)	Uscita stabilizzatori Outriggers extension Sortie de bequilles Breite der Abstützung mm (ft)	Larghezza stabilizzatori Outriggers width Largeur des bequilles Gesamtbreite der Abstützung mm (ft)	Pressione Pressure Pression Druck bar (psi)	Capacità serbatoio olio Oil tank capacity Capacité du réservoir de l'huile Öil tank inhalt L (us gal)
28000 (202560)	2800 (20256)	1750+1750 (5' 9" + 5' 9")	5838 (19' 2")	305 (4337)	155 (41)

	E4	E6	E8	E4F62	E4F63	E4F64	E6F62	E6F63	E6F64
Sbraccio idraulico Hydraulic boom length Longueur du bras hydraulique Hydraulic reichweite	m (ft)	11.29 (37')	15.54 (50' 12")	20.00 (65' 7")	17.44 (57' 3")	19.32 (63' 5")	21.40 (70' 3")	23.48 (77' 1")	25.56 (83' 10")
Lunghezza Length Longueur Gesamtbreite	mm (ft)	1007 (3' 4")	1007 (3' 4")	1007 (3' 4")	1007 (3' 4")	1007 (3' 4")	1007 (3' 4")	1007 (3' 4")	1007 (3' 4")
Larghezza Width Largeur Breite	mm (ft)	2500 (8' 2")	2500 (8' 2")	2500 (8' 2")	2500 (8' 2")	2500 (8' 2")	2500 (8' 2")	2500 (8' 2")	2500 (8' 2")
Altezza Height Hauteur Höhe	mm (ft)	2230 (7' 4")	2230 (7' 4")	2230 (7' 4")	2230 (7' 4")	2230 (7' 4")	2230 (7' 4")	2230 (7' 4")	2230 (7' 4")
Peso (senza olio e montaggio) Weight (without oil and fitting) Poids (sans huile et montage) Gewicht (ohne Öl und ohne)	Kg (lbs)	3080 (6790)	3390 (7480)	3610 (7960)	3720 (8201)	3790 (8356)	3850 (8488)	4030 (8885)	4160 (9171)



27500 E.A.S.C. Plus