



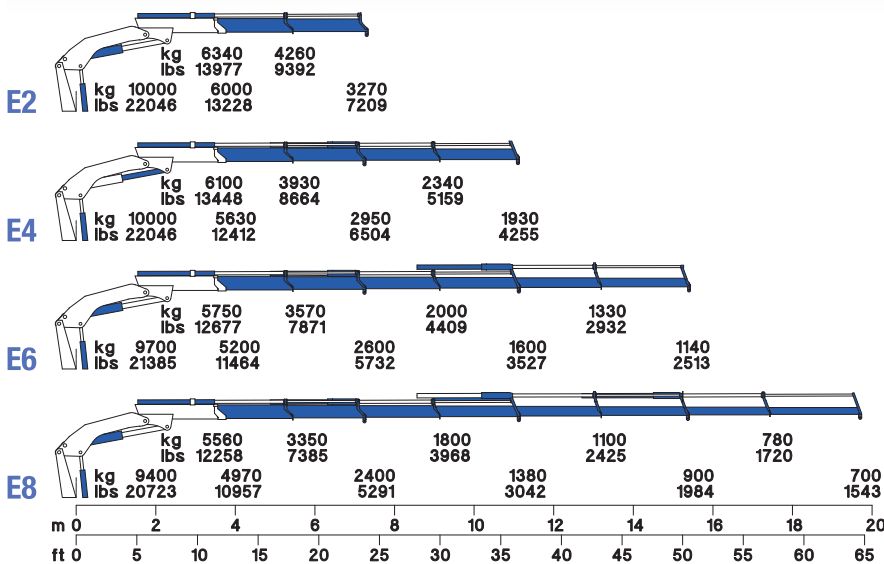
STANDARD



OPTIONAL



Momento statico massimo al perno torretta Max. static moment at the turret pin Moment statique max. a l'axe de la tourelle Max. statisches ubmoment am krausaulenbolzen daN*m (lb*ft)	Coppia di rotazione Slew torque Moment de rotation Drehmoment daN*m (lb*ft)	Uscita stabilizzatori Outriggers extension Sortie de bequilles Breite der Abstützung mm (ft)	Larghezza stabilizzatori Outriggers width Largeur des bequilles Gesamtbreite der Abstützung mm (ft)	Pressione Pressure Pression Druck bar (psi)	Capacità serbatoio olio Oil tank capacity Capacité du réservoir de l'huile Öil tank inhalt L (us gal)
28200 (207992)	2800 (20256)	1750+1750 (5' 9" + 5' 9")	5838 (19' 2")	300 (4266)	155 (41)



	E2	E4	E6	E8
Sbraccio idraulico / Hydraulic boom length / Longueur du bras hydraulique / Hydraulic reichweite	m (ft) 7.30 (23' 11")	11.10 (36' 5")	15.40 (50' 6")	19.70 (64' 8")
Lunghezza / Length / Longueur / Gesamtbreite	mm (ft) 1007 (3' 4")	1007 (3' 4")	1007 (3' 4")	1007 (3' 4")
Larghezza / Width / Largeur / Breite	mm (ft) 2500 (8' 2")	2500 (8' 2")	2500 (8' 2")	2500 (8' 2")
Altezza / Height / Hauteur / Höhe	mm (ft) 2230 (7' 4")	2230 (7' 4")	2230 (7' 4")	2230 (7' 4")
Peso (senza olio e montaggio) / Weight (without oil and fitting) Poids (sans huile et montage / Gewicht (ohne Öl und ohne)	Kg (lbs) 2710 (5974)	3030 (6680)	3340 (7363)	3560 (7848)