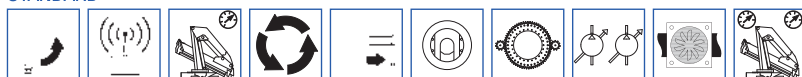


# Serie 575000AXO E



## STANDARD



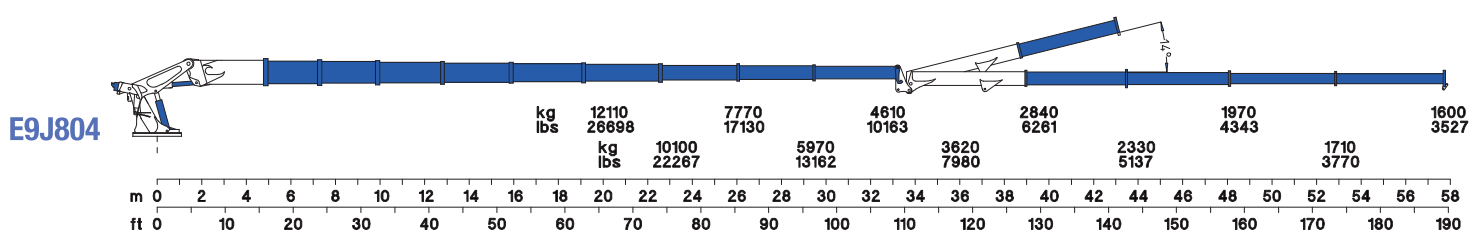
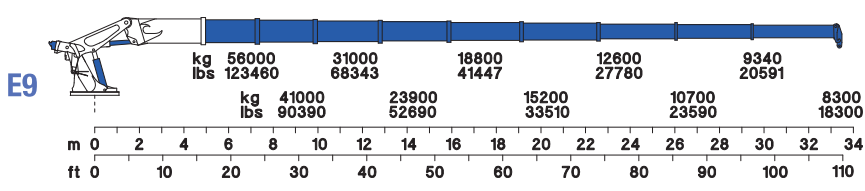
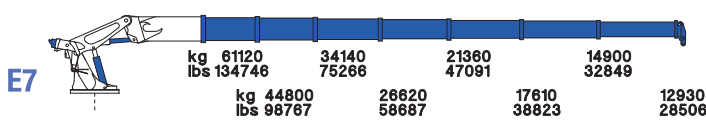
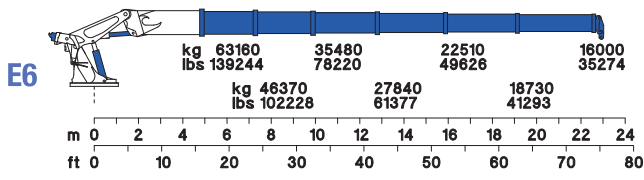
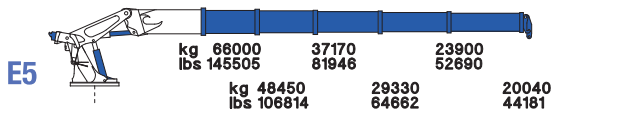
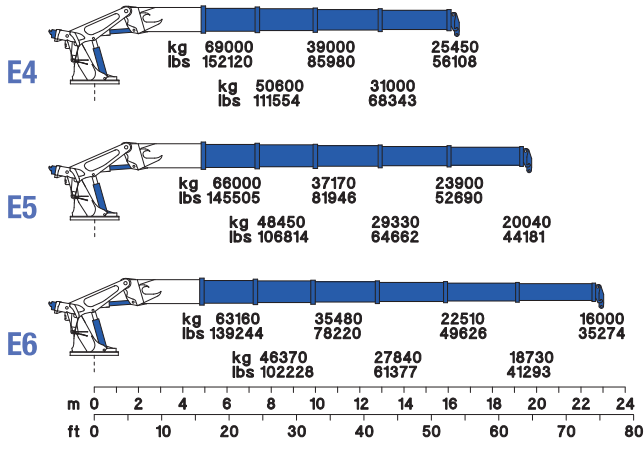
## OPTIONAL



<b>Momento statico massimo al perno torretta</b> Max. static moment at the turret pin Moment statique max. a l'axe de la tourelle Max. statisches ubmoment am kran Saulenbolzen daN*m (lb*ff)	<b>Coppia di rotazione</b> Slew torque Moment de rotation Drehmoment daN*m (lb*ff)	<b>Uscita laterale stabilizzatori</b> Outriggers lateral extension Sortie laterale de bequilles Seitliche lange der Abstütungen mm (ft)	<b>Larghezza stabilizzatori</b> Outriggers width Largeur des bequilles Gesamtbreite der Abstützung mm (ft)	<b>Pressione</b> Pressure Pression Druck bar (psi)	<b>Capacità serbatoio olio</b> Oil tank capacity Capacité du réservoir de l'huile Öl tank inhalt L (us gal)
515000 (3725715)	33270 (240688)	3150 + 3150 (10' 4" + 10' 4") 5200 + 5200 (17' 1" + 17' 1")	12340 (40' 6")	330 (4692)	770 + 455 (203 + 120)

	<b>E4</b>	<b>E5</b>	<b>E6</b>	<b>E7</b>	<b>E9</b>	<b>E9J804</b>
<b>Sbraccio idraulico</b> Hydraulic boom length Longueur du bras hydraulique Hydraulic reichweite m (ft)	16.14 (52' 11")	19.38 (63' 7")	22.84 (74' 11")	26.30 (86' 3")	33.45 (109' 9")	57.84 (189' 9")
<b>Lunghezza</b> Length Longueur Gesamtbreite mm (ft)	10530 (34' 7")	10530 (34' 7")	10530 (34' 7")	10530 (34' 7")	10530 (34' 7")	10530 (34' 7")
<b>Larghezza</b> Width Largeur Breite mm (ft)	2548 (8' 4")	2548 (8' 4")	2548 (8' 4")	2548 (8' 4")	2548 (8' 4")	2548 (8' 4")
<b>Altezza</b> Height Hauteur Höhe mm (ft)	2880 (9' 5")	2880 (9' 5")	2880 (9' 5")	2880 (9' 5")	2880 (9' 5")	2880 (9' 5")
<b>Peso (senza olio e montaggio)</b> Weight (without oil and fitting) Poids (sans huile et montage) Gewicht (ohne Öl und ohne) Kg (lbs)	39590 (87281)	40980 (90345)	42280 (93211)	43360 (95592)	45300 (99869)	50450 (111223)

**GORMAGH**



NOTA: Le portate delle versioni E4, E5, E6, ed E7 valgono solo per gru senza predisposizione per il JIB.  
 NOTE: The lifting capacities of the versione E4,E5,E6 and E7 are valid only for cranes without JIB predisposal.  
 NOTE: Les capacités de levage des versions E4, E5, E6 et E7 sont valables seulement pour grues sans predisposition JIB.

575000AXO E