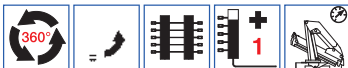


# Serie 8700 E



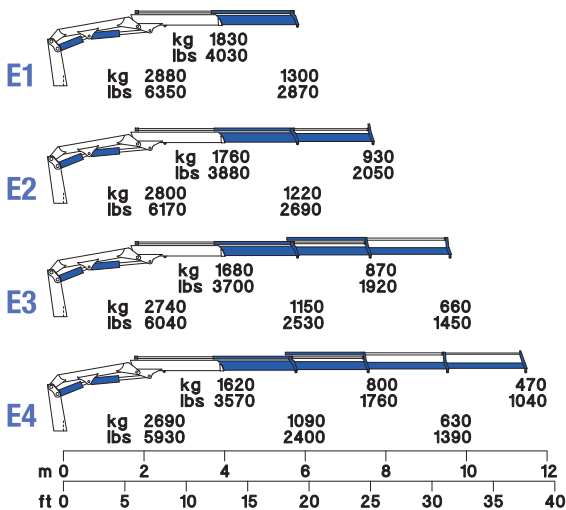
## STANDARD



## OPTIONAL



Momento statico massimo al perno torretta Max. static moment at the turret pin Moment statique max. a l'axe de la tourelle Max. statisches ubmoment am krausnalenbolzen	Coppia di rotazione Slew torque Moment de rotation Drehmoment	Uscita stabilizzatori Outriggers extension Sortie de bequilles Breite der Abstützung	Larghezza stabilizzatori Outriggers width Largueur des bequilles Gesamtbreite der Abstützung	Pressione Pressure Pression Druck	Capacità serbatoio olio Oil tank capacity Capacité du réservoir de l'huile Öl tank inhalt
daN*m (lb*ft)	daN*m (lb*ft)	mm (ft)	mm (ft)	bar (psi)	L (us gal)
8730 (63156)	820 (5932)	1200+1100 (3' 11" + 3' 7")	4500 (14' 9")	275 (3910)	50 (13)



	E1	E2	E3	E4
Sbraccio idraulico / Hydraulic boom length / Longueur du bras hydraulique / Hydraulic reichweite	m (ft) 5.77 (18' 11")	7.63 (25')	9.53 (31' 3")	11.47 (37' 8")
Lunghezza / Length / Longueur / Gesamtbreite	mm (ft) 630+35 (2' 2" + 1")	630+35 (2' 2" + 1")	630+35 (2' 2" + 1")	630+35 (2' 2" + 1")
Larghezza / Width / Largeur / Breite	mm (ft) 2300 (7' 7")	2300 (7' 7")	2300 (7' 7")	2300 (7' 7")
Altezza / Height / Hauteur / Höhe	mm (ft) 2000 (6' 7")	2000 (6' 7")	2000 (6' 7")	2000 (6' 7")
Peso (senza olio e montaggio) / Weight (without oil and fitting) / Poids (sans huile et montage) / Gewicht (ohne Öl und ohne)	Kg (lbs) 1110 (2447)	1194 (2632)	1262 (2782)	1350 (2976)