

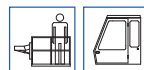
# Serie 91000 TECH



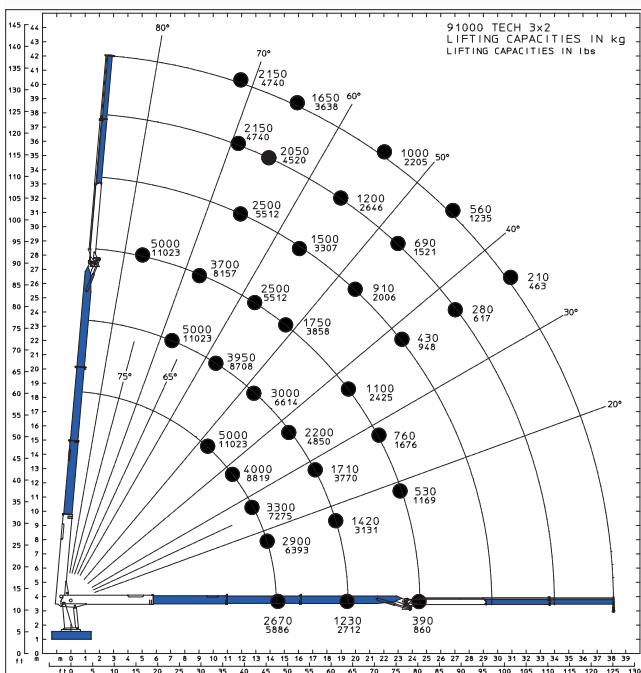
## STANDARD



## OPTIONAL



Momento statico massimo al perno torretta Max. static moment at the turret pin Moment statique max. a l'axe de la tourelle Max. statisches ubmoment am krausensbolzen daN*m (lb*ft)	Coppia di rotazione Slew torque Moment de rotation Drehmoment daN*m (lb*ft)	Uscita stabilizzatori Outriggers extension Sortie de bequilles Breite der Abstuetzung mm (ft)	Larghezza stabilizzatori Outriggers width Largeur des bequilles Gesamtbreite der Abstuetzung mm (ft)	Pressione Pressure Pression Druck bar (psi)	Capacità serbatoio olio Oil tank capacity Capacité du réservoir de l'huile Öl tank inhalt L (us gal)
79700 (576581)	5050 (36533)	2780+2780 (9' 1" + 9' 1")	8060 (26' 5")	270 (3839)	600 (158)



Sbraccio idraulico / Hydraulic boom lenght / Longueur du bras hydraulique / Hydraulic reichweite	m (ft)	38.14 (125' 2")
Peso (senza olio e montaggio) / Weight (without oil and fitting) / Poids (sans huile et montage) / Gewicht (ohne Öl und ohne)	Kg (lbs)	16640 (36685)